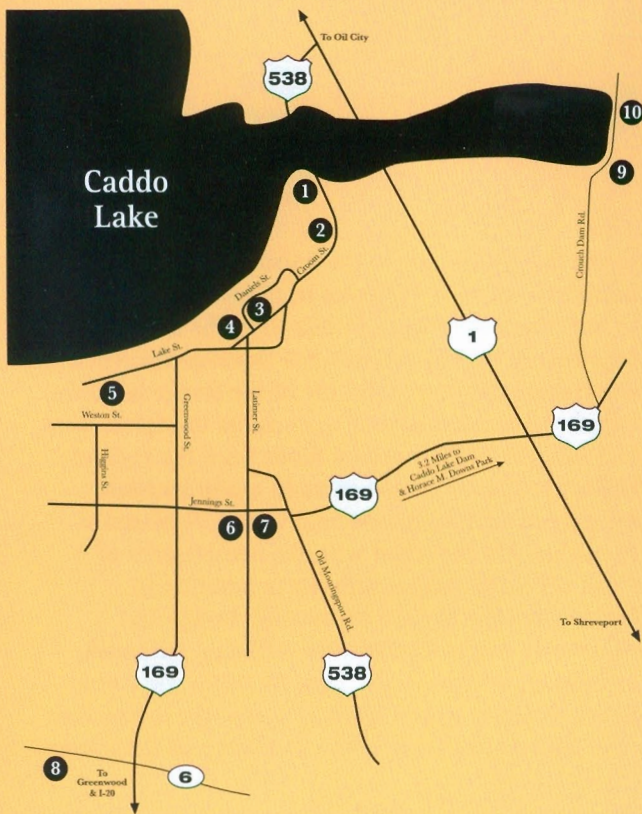


Historic Caddo Lake Drawbridge

at Mooringsport, Louisiana



Other attractions in Mooringsport:

- 1 The Historic Caddo Lake Drawbridge
- 2 By The Lake Park
- 3 Mooringsport Mini-Museum
- 4 Masonic Hall (c. 1916)
- 5 Old Mooringsport Cemetery (c. 1840)
- 6 Historic School Building (c. 1911)
- 7 Library & Community Center Bldg. (c. 1929)
- 8 Huddie "Leadbelly" Ledbetter's Gravesite
- 9 Horace M. Downs Park
- 10 Caddo Lake Dam



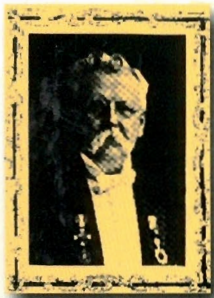
www.caddolakedrawbridge.com

Call (318)929-2806 for Caddo Parish Park Information

HISTORY

In 1914, as modes of transportation progressed, the Historic Caddo Lake Drawbridge at Mooringsport was built to replace the ferry. The Midland Bridge Company of Kansas City, Missouri built the bridge under authority of the Caddo Parish Police Jury. This vehicular bridge illustrates the unique "Vertical-Lift" design of Mr. John Alexander Low Waddell of the illustrious firm of Waddell and Harrington Bridges. This design allowed the entire center span to lift in a vertical direction to allow tall oil equipment to pass through.

In the summer of 1941, just prior to World War II, the United States Army held maneuvers in and around Mooringsport as a means of preparing the soldiers for war. During the maneuvers, Generals Dwight D. Eisenhower and George S. Patton came to Mooringsport and led the Red and Blue armies in the "capture" of the bridge. They also bombed the bridge with sacks of flour.



Mr. John Alexander
Low Waddell



Mr. John Lyle
Harrington

THE SAVING ENDEAVOR

In the late 1970's due to the narrow width of the bridge, the flow of vehicular traffic was changed to one alternating lane. At this time, the Louisiana Department of Transportation & Development (DOTD) determined that the useful life of the bridge had been exhausted and it was time to consider its replacement. In 1989, the DOTD received funds from the Federal Highway Administration to build a new two-lane bridge and destroy the original bridge. A citizen's campaign was launched with the involvement of local, state and federal officials in addition to political leaders to save the historic bridge and convert its use to a pedestrian walkway, landmark, and tourist attraction. On June 26, 1991, the Caddo Parish Commissioners voted to accept the bridge into the Caddo Parish Department of Parks and Recreation.

On July 24, 1991, The Historic American Engineering Record rendered an evaluation of the bridge as nationally significant due to its designer, its unique design, and the fact that it is the sole surviving example of this bridge type in the state of Louisiana. With this determination, the bridge was eligible to be presented for listing on the National Register of Historic Places.

A rededication ceremony marked the saving of the town's chief landmark and honored those who had contributed to the endeavor. On October 18, 1996, the Historic Caddo Lake Drawbridge was officially entered into the National Register of Historic Places.

Currently the drawbridge is open to the public from dawn to dusk, 7 days a week. The bridge is located on LA Hwy. 538 at Caddo Lake just north of downtown Mooringsport.